

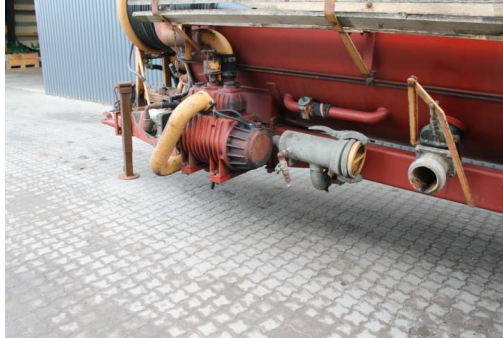
Accept cookies from this site

This website uses cookies to track your behaviour and to improve your experience on the site. You can always delete saved cookies by visiting the advanced settings of your browser.

[Do not accept cookies](#)

[Only accept functional cookies](#)

[Accept all cookies](#)



Specifications

Article number

10190

Year

1000

rear	1900
Capacity total (Ltr.)	8000
Water (L)	2000
Sludge (L)	6000
Level indicator	Yes
Removeable seperator	No
Central lubrication	No
Vacuum pump capacity	MEC8000
Flush pump capacity	PL204
Remote control	No
Tower/crane	Yes
Tower size	8"
Antifreeze	No
Tire size	23,1X34
Brakes	No
3-axle	No
2-axle	No
1-axle	Yes

We always have more than 250 used machines from different brands:

We have a large selection of used slurry tankers, injectors, hose booms and muck spreader

- ✓ Samson
- ✓ AP
- ✓ Kimadan
- ✓ Duport
- ✓ Growi
- ✓ Harsø
- ✓ Vredo



Petersmindevej 6 - DK-8800 Viborg - Tlf:+45 86 61 07 77 - E-mail:viborg@goma.dk